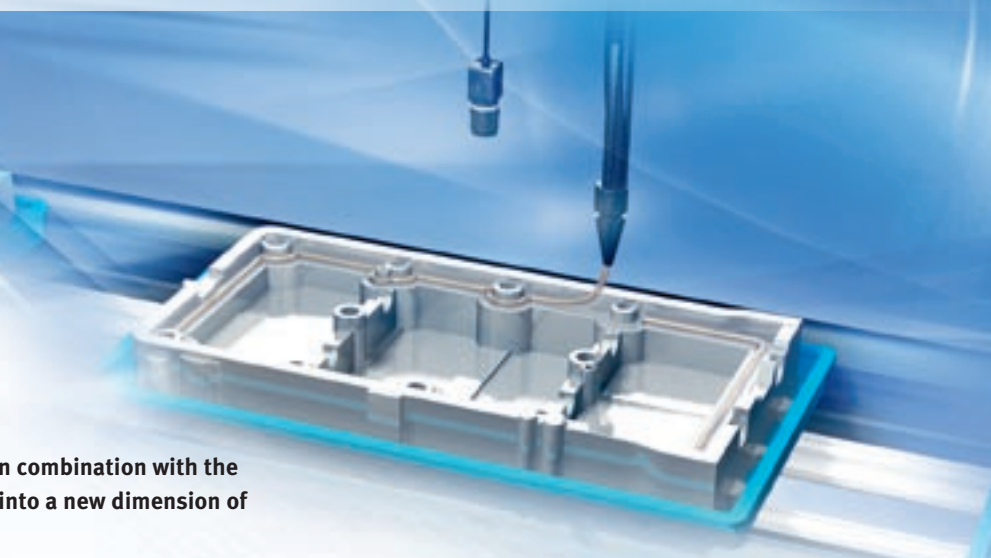


FLEXPECT-GLUE BEAD



FlexXpect is a modular Vision platform. In combination with the powerful Xpectia-hardware, it takes you into a new dimension of specialisation.

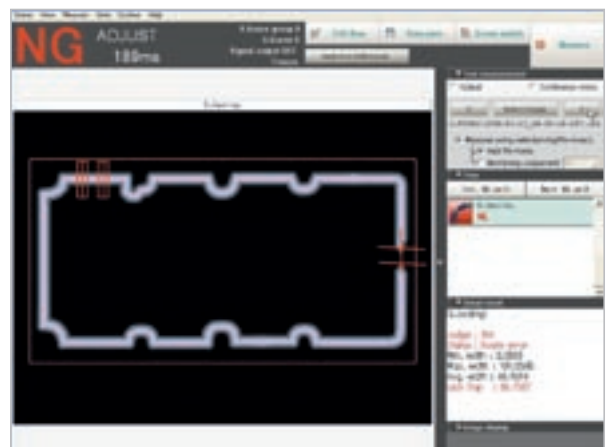
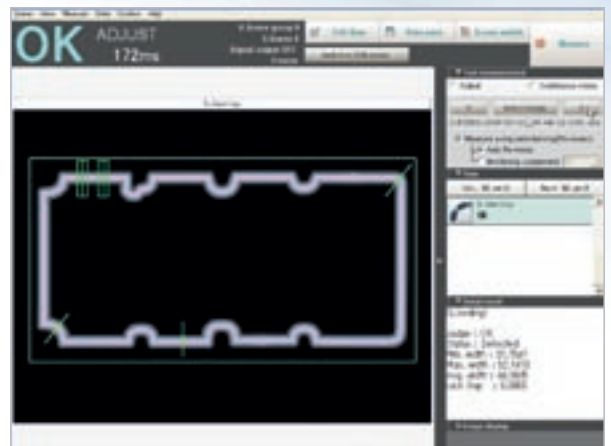
The FlexXpect-Glue Bead inspects the complete sealing of automotive parts in one shot. Driven by the real colour functionality, any sealing can be identified and checked, independent how visible it is. Featuring a simple set-up procedure and automatic calculation of the path, it represents a powerful and straight forward solution for any glue application.

Features of FlexXpect-Glue Bead:

- One shot inspection of the complete path
- Easy set-up
- Automatic path calculation
- Real colour glue extraction

Glue Bead inspection:

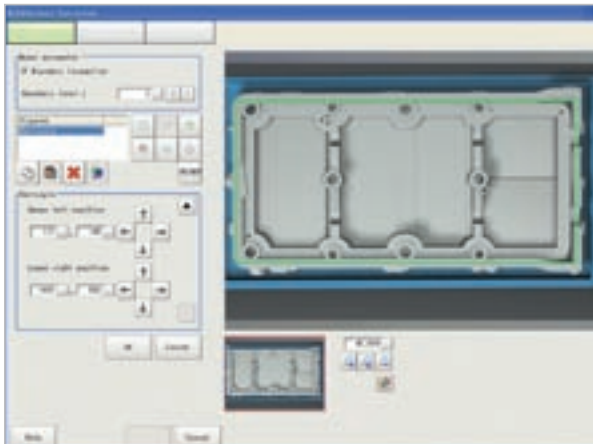
- Correct path
- Thickness
- Interrupt



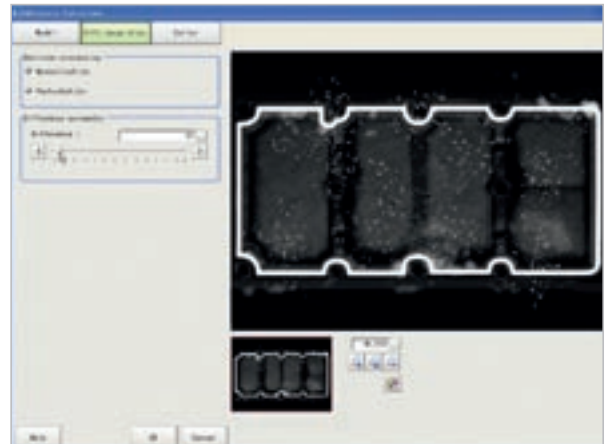
FLEXPECT-GLUE BEAD

FlexXpect-Glue Bead features an intuitive and easy set-up procedure. No expert knowledge of the user is required.

Step 1: Define inspection area

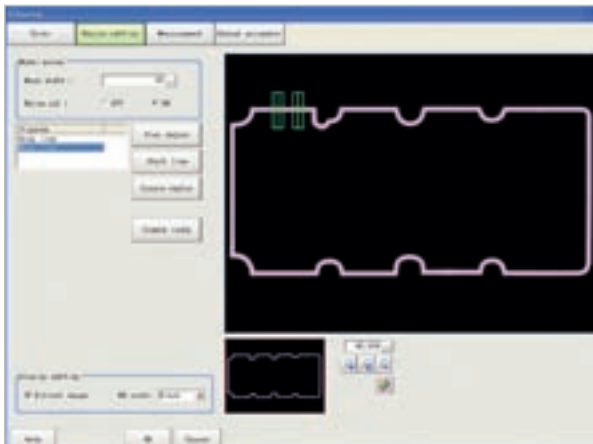


Step 2: Teach the glue

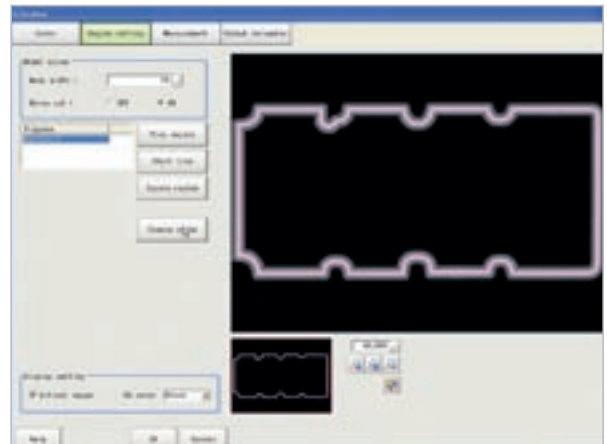


- Extract the glue by real colour filtering
- Teach the colour of the glue

Step 3: Define start & end point of the glue



Step 4: Automatic calculation of the path of the Glue Bead



Item description	Order code
FlexXpect-Glue Bead software module	FLEXPECT-GLUE BEAD

Note: FlexXpect software modules require Xpectia/FZW hardware. This is not part of the item and needs to be ordered independently.